

2020

2020.06.01~06.07

1.6 1

6 7 45

167

92.66

6 28

2.6 1

16-20 6 1 -7 1

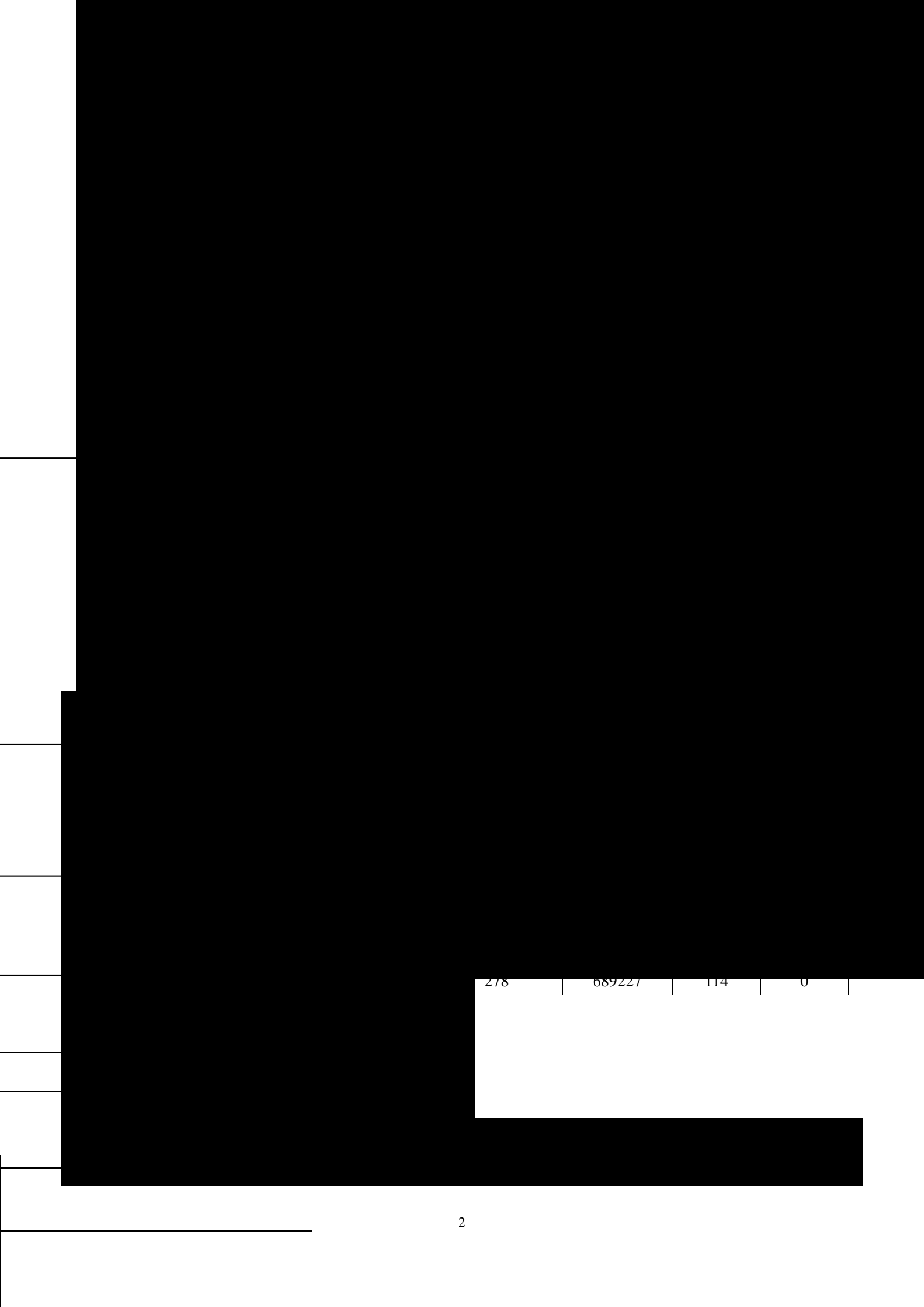
3.6 7

2020

4.6 3

6 1 6 3

6 7



278	689227	114	0
-----	--------	-----	---

16		65	127	525	415121	127	0
17		60	9	177	695256	9	0
18		44	49	117	38143	72	0
19		35	18	22	25630	16	0
20		35	42	42	96829	36	0
21		20	32	32	37481	32	0
22		8	1	70	7642	0	0
		1449	1955	3860	6008442	1764	34

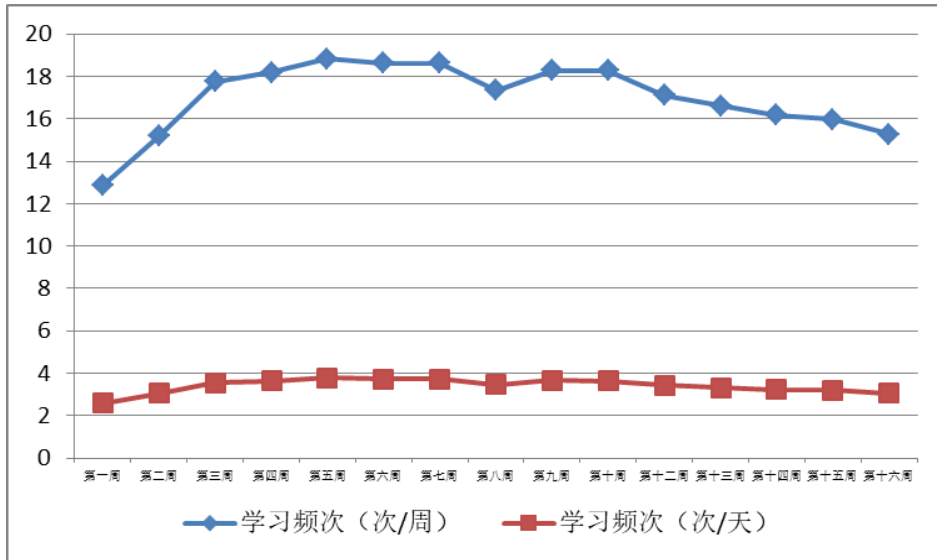
15.26

/ . 3.05 / .

1 2

2

	.		/ .	/ .
1	2.28	316272	12.85	2.57
2	3.2	747704	15.19	3.04
3	3.9	1309675	17.74	3.55
4	3.16	1790321	18.18	3.64
5	3.21	2317724	18.83	3.77
6	3.29	2749049	18.61	3.72
7	4.5	3210737	18.63	3.73
8	4.12	3416416	17.34	3.45
9	4.19	4049193	18.28	3.66
10	4.27	4494122	18.26	3.65
11	5.11	5058747	17.12	3.43
12	5.17	5314684	16.61	3.32
13	5.24	5572424	16.17	3.23
14	5.31	5891944	15.96	3.19
15	6.7	6008442	15.26	3.05



1 1-16

2.

1

6 6

3324

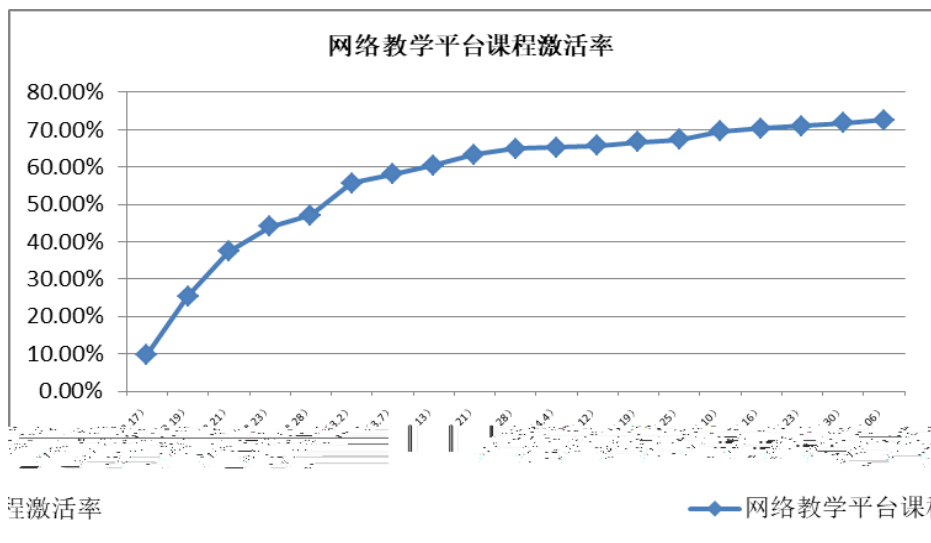
2411

72.53%

3

2

4



2

3

	.			%
1	2.17	3254	318	9.77%
2	2.19	3254	826	25.38%
3	2.21	3254	1214	37.31%
4	2.23	3254	1434	44.07%
5	2.28	3245	1527	47.06%
6	3.2	3245	1821	55.76%
7	3.7	3248	1885	58.04%
8	3.13	3250	1967	60.51%
9	3.21	3250	2060	63.40%
10	3.28	3254	2114	64.97%

1

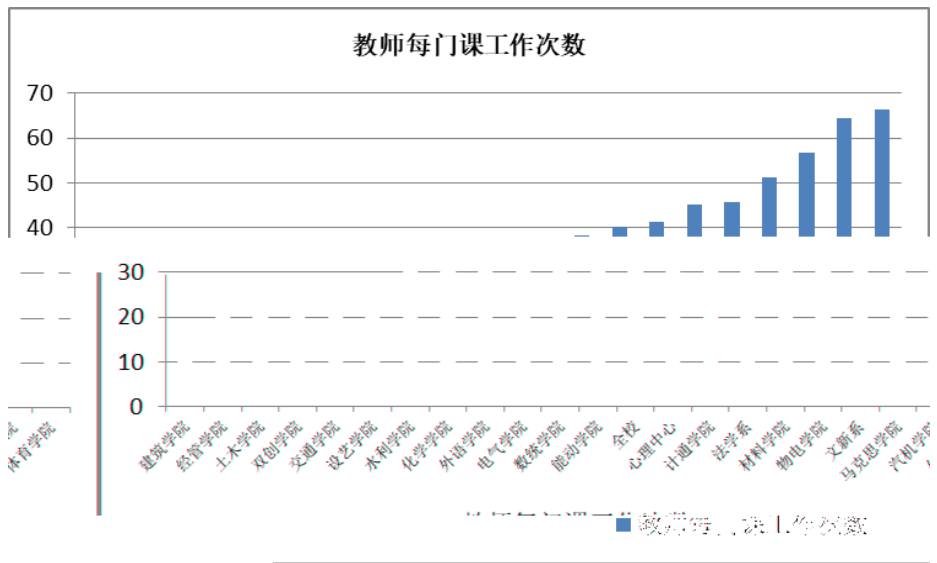
P_{yd} 12.22 / .

4

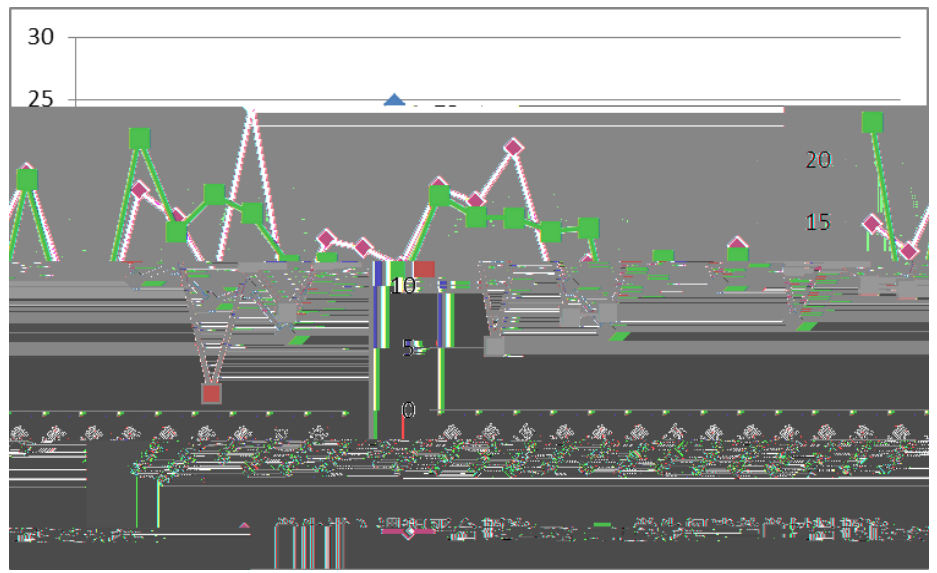
5

4

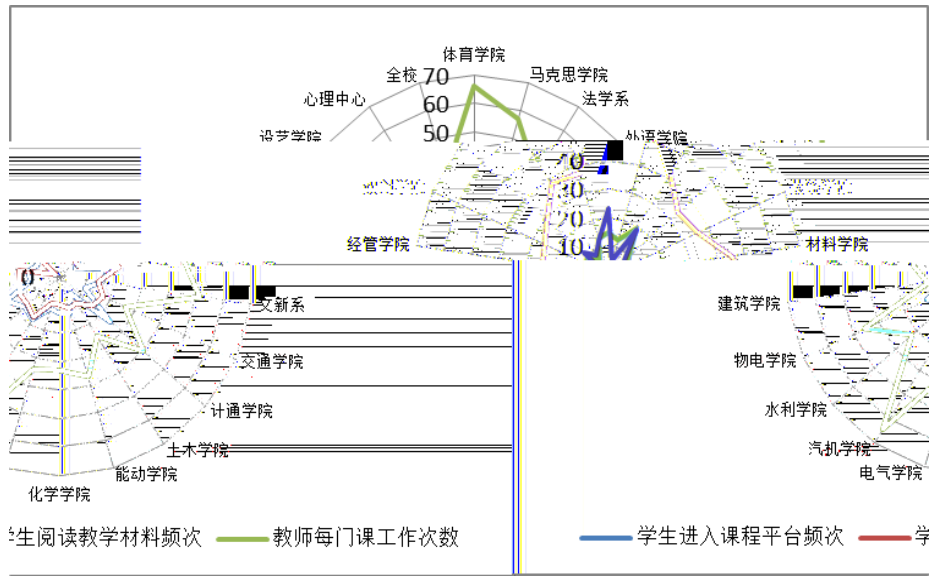
P_{js} P_{xs} P_{yd}



3



4



5

4

				P_{js} /	P_{xs} /	P_{yd} /	1.11-6.6 %	1.11-5.30 %	1.11-5.23 %	1.11-5.16 %	1.11-5.10 %	1.11-4.25 %	1.11-4.19 %	1.11-4.12 %
1		160	156	66.32	14.86	23.06	97.50%	97.50%	97.50%	97.50%	97.50%	97.50%	97.50%	97.50%
2		121	116	56.87	12.60	5.14	95.87%	95.87%	95.87%	95.04%	95.04%	95.04%	95.04%	95.04%
3		61	56	41.32	19.07	18.53	91.80%	88.52%	83.61%	81.97%	81.97%	81.97%	81.97%	81.97%
4		228	202	33.26	9.98	7.56	88.60%	87.72%	88.16%	88.16%	88.16%	88.16%	88.16%	87.72%
5		137	120	35.61	6.36	7.88	87.59%	86.86%	87.59%	86.86%	86.86%	86.86%	86.86%	86.86%
6		23	20	45.25	17.64	21.89	86.96%	86.96%	86.96%	86.96%	86.96%	86.96%	86.96%	78.26%
7		111	96	51.22	15.42	14.34	86.49%	85.59%	85.59%	84.68%	84.68%	83.78%	83.78%	83.78%
8		267	225	26.19	10.17	17.31	84.27%	83.52%	82.40%	81.27%	77.53%	65.17%	64.04%	62.92%
9		236	197	40.17	24.53	15.82	83.47%	83.05%	83.47%	83.05%	81.36%	79.66%	78.81%	77.97%
10		190	156	25.06	7.14	11.60	82.11%	81.58%	81.05%	81.05%	80.00%	79.47%	79.47%	78.95%
11		143	104	36.67	13.70	11.82	72.73%	70.63%	70.63%	69.23%	69.23%	68.53%	67.83%	67.13%
12		178	178	33.19	13.02	9.99	72.47%	72.47%	69.66%	68.54%	67.98%	65.73%	65.73%	64.61%
13		174	120	33.79	11.57	9.77	68.97%	68.97%	68.97%	68.97%	68.97%	66.67%	65.52%	64.37%
14		134	92	64.40	17.93	17.25	68.66%	67.16%	64.93%	64.18%	64.18%	63.43%	61.94%	60.45%

				P_{js} /	P_{xs} /	P_{yd} /	1.11-6.6 %	1.11-5.30 %	1.11-5.23 %	1.11-5.16 %	1.11-5.10 %	1.11-4.25 %	1.11-4.19 %	1.11-4.12 %
15		141	96	32.03	16.73	15.54	68.09%	68.09%	66.67%	65.96%	65.96%	60.99%	59.57%	56.03%
16		112	68	45.69	21.04	15.49	60.71%	60.71%	59.82%	59.82%	59.82%	58.93%	58.93%	58.04%

1

2

1

2

2

1

2

3

1

2

3

1

2

3

2020 6 8